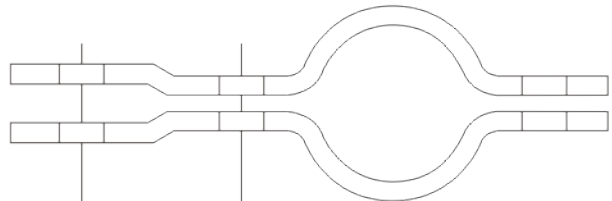




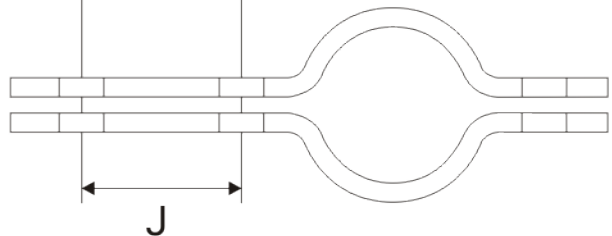
<b>KAPBEUGEL DIN 3567 model A B C</b>				<b>295</b>
Ø 22 – 1016 mm		1/2" - 40"		
op aanvraag: naar eigen ontwerp en materiaal specificatie				
RVS-304	RVS-316	S235 zwart	THVZ	Ø
				mm inch

<a href="http://www.hazal.nl/295">www.hazal.nl/295</a>	offerte <b>295</b>	<a href="mailto:verkoop@hazal.nl">verkoop@hazal.nl</a>							
tussentijdse model wijzigingen voorbehouden									
* = niet genormaliseerd									
DN	A	B x D	C	F	G	H	R	J	montage

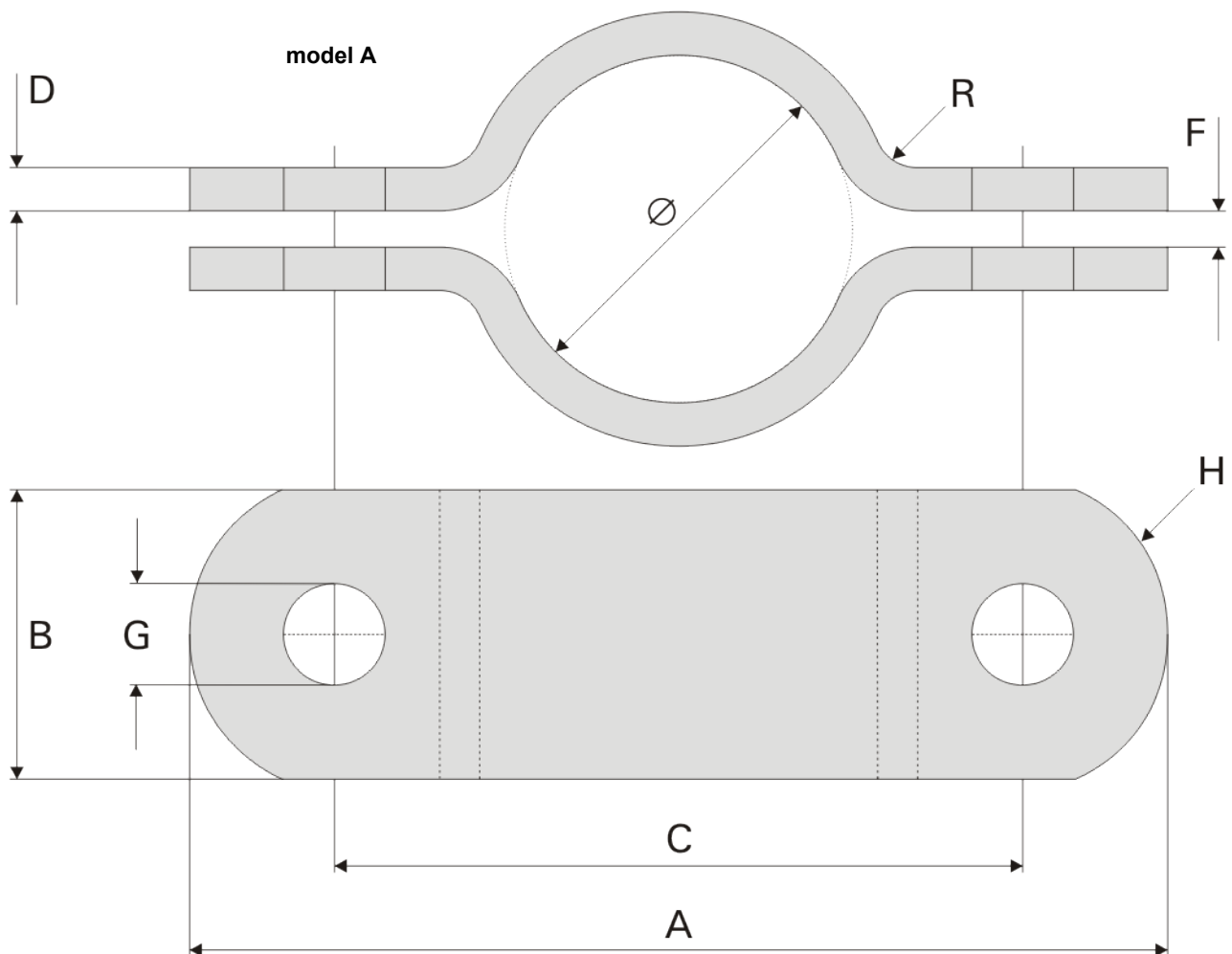
model C



model B



model A





**KAPBEUGEL DIN 3567 model A B C**  
**295**

Ø 22 – 1016 mm 1/2" - 40"

op aanvraag: naar eigen ontwerp en materiaal specificatie

**RVS-304 RVS-316 S235 zwart THVZ**

**Ø**  
mm inch

**www.hazal.nl/295 offerte 295 verkoop@hazal.nl**

tussentijdse model wijzigingen voorbehouden

\* = niet genormaliseerd

	RVS-304	RVS-316	S235 zwart	THVZ	Ø	DN	A	B x D	C	F	G	H	R	J	montage
<b>A</b>	295.02.0022	295.04.0022	295.09.0022	295.01.0022	22 1/2"	15	86	30 x 5	56	7	12	18	4		M10 x 30
<b>B</b>	295.12.0022	295.14.0022	295.19.0022	295.11.0022	22 1/2"	15	132	30 x 5	56	7	12	18	4	46	M10 x 30
<b>C</b>	295.22.0022	295.24.0022	295.29.0022	295.21.0022	22 1/2"	15	132	30 x 5	56	7	12	18	4	46	M10 x 30
<b>A</b>	295.02.0025	295.04.0025	295.09.0025	295.01.0025	25		92	30 x 5	62	7	12	18	4		M10 x 30
<b>B</b>	295.12.0025	295.14.0025	295.19.0025	295.11.0025	25		138	30 x 5	62	7	12	18	4	46	M10 x 30
<b>C</b>	295.22.0025	295.24.0025	295.29.0025	295.21.0025	25		138	30 x 5	62	7	12	18	4	46	M10 x 30
<b>A</b>	295.02.0027	295.04.0027	295.09.0027	295.01.0027	27 3/4"	20	96	30 x 5	66	7	12	18	4		M10 x 30
<b>B</b>	295.12.0027	295.14.0027	295.19.0027	295.11.0027	27 3/4"	20	142	30 x 5	66	7	12	18	4	46	M10 x 30
<b>C</b>	295.22.0027	295.24.0027	295.29.0027	295.21.0027	27 3/4"	20	142	30 x 5	66	7	12	18	4	46	M10 x 30
<b>* A</b>	295.02.0030	295.04.0030	295.09.0030	295.01.0030	30		98	30 x 5	68	7	12	18	4		M10 x 30
<b>* B</b>	295.12.0030	295.14.0030	295.19.0030	295.11.0030	30		144	30 x 5	68	7	12	18	4	46	M10 x 30
<b>* C</b>	295.22.0030	295.24.0030	295.29.0030	295.21.0030	30		144	30 x 5	68	7	12	18	4	46	M10 x 30
<b>* A</b>	295.02.0032	295.04.0032	295.09.0032	295.01.0032	32		100	30 x 5	70	7	12	18	4		M10 x 30
<b>* B</b>	295.12.0032	295.14.0032	295.19.0032	295.11.0032	32		146	30 x 5	70	7	12	18	4	46	M10 x 30
<b>* C</b>	295.22.0032	295.24.0032	295.29.0032	295.21.0032	32		146	30 x 5	70	7	12	18	4	46	M10 x 30
<b>A</b>	295.02.0034	295.04.0034	295.09.0034	295.01.0034	34 1"	25	102	30 x 5	72	7	12	18	4		M10 x 30
<b>B</b>	295.12.0034	295.14.0034	295.19.0034	295.11.0034	34 1"	25	148	30 x 5	72	7	12	18	4	46	M10 x 30
<b>C</b>	295.22.0034	295.24.0034	295.29.0034	295.21.0034	34 1"	25	148	30 x 5	72	7	12	18	4	46	M10 x 30
<b>A</b>	295.02.0038	295.04.0038	295.09.0038	295.01.0038	38		106	30 x 5	76	7	12	18	4		M10 x 30
<b>B</b>	295.12.0038	295.14.0038	295.19.0038	295.11.0038	38		152	30 x 5	76	7	12	18	4	46	M10 x 30
<b>C</b>	295.22.0038	295.24.0038	295.29.0038	295.21.0038	38		152	30 x 5	76	7	12	18	4	46	M10 x 30
<b>A</b>	295.02.0042	295.04.0042	295.09.0042	295.01.0042	42 1 1/4"	32	112	30 x 5	82	7	12	18	4		M10 x 30
<b>B</b>	295.12.0042	295.14.0042	295.19.0042	295.11.0042	42 1 1/4"	32	158	30 x 5	82	7	12	18	4	46	M10 x 30
<b>C</b>	295.22.0042	295.24.0042	295.29.0042	295.21.0042	42 1 1/4"	32	158	30 x 5	82	7	12	18	4	46	M10 x 30
<b>A</b>	295.02.0045	295.04.0045	295.09.0045	295.01.0045	45		114	30 x 5	84	7	12	18	4		M10 x 30
<b>B</b>	295.12.0045	295.14.0045	295.19.0045	295.11.0045	45		160	30 x 5	84	7	12	18	4	46	M10 x 30
<b>C</b>	295.22.0045	295.24.0045	295.29.0045	295.21.0045	45		160	30 x 5	84	7	12	18	4	46	M10 x 30
<b>A</b>	295.02.0048	295.04.0048	295.09.0048	295.01.0048	48 1 1/2"	40	118	30 x 5	88	7	12	18	4		M10 x 30
<b>B</b>	295.12.0048	295.14.0048	295.19.0048	295.11.0048	48 1 1/2"	40	164	30 x 5	88	7	12	18	4	46	M10 x 30
<b>C</b>	295.22.0048	295.24.0048	295.29.0048	295.21.0048	48 1 1/2"	40	164	30 x 5	88	7	12	18	4	46	M10 x 30
<b>* A</b>	295.02.0054	295.04.0054	295.09.0054	295.01.0054	54		124	30 x 5	94	7	12	18	4		M10 x 30
<b>* B</b>	295.12.0054	295.14.0054	295.19.0054	295.11.0054	54		170	30 x 5	94	7	12	18	4	46	M10 x 30
<b>* C</b>	295.22.0054	295.24.0054	295.29.0054	295.21.0054	54		170	30 x 5	94	7	12	18	4	46	M10 x 30
<b>* A</b>	295.02.0057	295.04.0057	295.09.0057	295.01.0057	57		144	40 x 6	104	9	14	22	6		M12 x 40
<b>* B</b>	295.12.0057	295.14.0057	295.19.0057	295.11.0057	57		198	40 x 6	104	9	14	22	6	54	M12 x 40
<b>* C</b>	295.22.0057	295.24.0057	295.29.0057	295.21.0057	57		198	40 x 6	104	9	14	22	6	54	M12 x 40
<b>A</b>	295.02.0060	295.04.0060	295.09.0060	295.01.0060	60 2"	50	148	40 x 6	108	9	14	22	6		M12 x 40
<b>B</b>	295.12.0060	295.14.0060	295.19.0060	295.11.0060	60 2"	50	202	40 x 6	108	9	14	22	6	54	M12 x 40
<b>C</b>	295.22.0060	295.24.0060	295.29.0060	295.21.0060	60 2"	50	202	40 x 6	108	9	14	22	6	54	M12 x 40
<b>* A</b>	295.02.0063	295.04.0063	295.09.0063	295.01.0063	63		151	40 x 6	111	9	14	22	6		M12 x 40
<b>* B</b>	295.12.0063	295.14.0063	295.19.0063	295.11.0063	63		205	40 x 6	111	9	14	22	6	54	M12 x 40
<b>* C</b>	295.22.0063	295.24.0063	295.29.0063	295.21.0063	63		205	40 x 6	111	9	14	22	6	54	M12 x 40
<b>* A</b>	295.02.0066	295.04.0066	295.09.0066	295.01.0066	66		154	40 x 6	114	9	14	22	6		M12 x 40
<b>* B</b>	295.12.0066	295.14.0066	295.19.0066	295.11.0066	66		208	40 x 6	114	9	14	22	6	54	M12 x 40
<b>* C</b>	295.22.0066	295.24.0066	295.29.0066	295.21.0066	66		208	40 x 6	114	9	14	22	6	54	M12 x 40
<b>* A</b>	295.02.0070	295.04.0070	295.09.0070	295.01.0070	70		158	40 x 6	118	9	14	22	6		M12 x 40
<b>* B</b>	295.12.0070	295.14.0070	295.19.0070	295.11.0070	70		212	40 x 6	118	9	14	22	6	54	M12 x 40
<b>* C</b>	295.22.0070	295.24.0070	295.29.0070	295.21.0070	70		212	40 x 6	118	9	14	22	6	54	M12 x 40
<b>A</b>	295.02.0076	295.04.0076	295.09.0076	295.01.0076	76 2 1/2"	65	162	40 x 6	122	9	14	22	6		M12 x 40
<b>B</b>	295.12.0076	295.14.0076	295.19.0076	295.11.0076	76 2 1/2"	65	216	40 x 6	122	9	14	22	6	54	M12 x 40
<b>C</b>	295.22.0076	295.24.0076	295.29.0076	295.21.0076	76 2 1/2"	65	216	40 x 6	122	9	14	22	6	54	M12 x 40



## KAPBEUGEL DIN 3567 model A B C

Ø 22 – 1016 mm 1/2" - 40"

295

op aanvraag: naar eigen ontwerp en materiaal specificatie

RVS-304 RVS-316 S235 zwart THVZ

Ø mm inch

www.hazal.nl/295 offerte 295 verkoop@hazal.nl

tussentijdse model wijzigingen voorbehouden

\* = niet genormaliseerd

	RVS-304	RVS-316	S235 zwart	THVZ	Ø mm inch	DN	A	B x D	C	F	G	H	R	J	montage
* A	295.02.0080	295.04.0080	295.09.0080	295.01.0080	80		166	40 x 6	126	9	14	22	6		M12 x 40
* B	295.12.0080	295.14.0080	295.19.0080	295.11.0080	80		220	40 x 6	126	9	14	22	6	54	M12 x 40
* C	295.22.0080	295.24.0080	295.29.0080	295.21.0080	80		220	40 x 6	126	9	14	22	6	54	M12 x 40
* A	295.02.0083	295.04.0083	295.09.0083	295.01.0083	83		169	40 x 6	129	9	14	22	6		M12 x 40
* B	295.12.0083	295.14.0083	295.19.0083	295.11.0083	83		223	40 x 6	129	9	14	22	6	54	M12 x 40
* C	295.22.0083	295.24.0083	295.29.0083	295.21.0083	83		223	40 x 6	129	9	14	22	6	54	M12 x 40
A	295.02.0089	295.04.0089	295.09.0089	295.01.0089	89 3"	80	176	40 x 6	136	9	14	22	6		M12 x 40
B	295.12.0089	295.14.0089	295.19.0089	295.11.0089	89 3"	80	230	40 x 6	136	9	14	22	6	54	M12 x 40
C	295.22.0089	295.24.0089	295.29.0089	295.21.0089	89 3"	80	230	40 x 6	136	9	14	22	6	54	M12 x 40
* A	295.02.0095	295.04.0095	295.09.0095	295.01.0095	95		182	40 x 6	142	9	14	22	6		M12 x 40
* B	295.12.0095	295.14.0095	295.19.0095	295.11.0095	95		236	40 x 6	142	9	14	22	6	54	M12 x 40
* C	295.22.0095	295.24.0095	295.29.0095	295.21.0095	95		236	40 x 6	142	9	14	22	6	54	M12 x 40
A	295.02.0102	295.04.0102	295.09.0102	295.01.0102	102 3 1/2"	90	189	40 x 6	149	9	14	22	6		M12 x 40
B	295.12.0102	295.14.0102	295.19.0102	295.11.0102	102 3 1/2"	90	243	40 x 6	149	9	14	22	6	54	M12 x 40
C	295.22.0102	295.24.0102	295.29.0102	295.21.0102	102 3 1/2"	90	243	40 x 6	149	9	14	22	6	54	M12 x 40
A	295.02.0108	295.04.0108	295.09.0108	295.01.0108	108		220	50 x 8	172	11	18	38	6		M16 x 50
B	295.12.0108	295.14.0108	295.19.0108	295.11.0108	108		290	50 x 8	172	11	18	38	6	70	M16 x 50
C	295.22.0108	295.24.0108	295.29.0108	295.21.0108	108		290	50 x 8	172	11	18	38	6	70	M16 x 50
A	295.02.0114	295.04.0114	295.09.0114	295.01.0114	114 4"	100	226	50 x 8	178	11	18	38	6		M16 x 50
B	295.12.0114	295.14.0114	295.19.0114	295.11.0114	114 4"	100	296	50 x 8	178	11	18	38	6	70	M16 x 50
C	295.22.0114	295.24.0114	295.29.0114	295.21.0114	114 4"	100	296	50 x 8	178	11	18	38	6	70	M16 x 50
A	295.02.0120	295.04.0120	295.09.0120	295.01.0120	120		232	50 x 8	184	11	18	38	6		M16 x 50
B	295.12.0120	295.14.0120	295.19.0120	295.11.0120	120		302	50 x 8	184	11	18	38	6	70	M16 x 50
C	295.22.0120	295.24.0120	295.29.0120	295.21.0120	120		302	50 x 8	184	11	18	38	6	70	M16 x 50
* A	295.02.0127	295.04.0127	295.09.0127	295.01.0127	127		239	50 x 8	191	11	18	38	6		M16 x 50
* B	295.12.0127	295.14.0127	295.19.0127	295.11.0127	127		309	50 x 8	191	11	18	38	6	70	M16 x 50
* C	295.22.0127	295.24.0127	295.29.0127	295.21.0127	127		309	50 x 8	191	11	18	38	6	70	M16 x 50
A	295.02.0133	295.04.0133	295.09.0133	295.01.0133	133		255	50 x 8	197	11	18	38	6		M16 x 50
B	295.12.0133	295.14.0133	295.19.0133	295.11.0133	133		314	50 x 8	197	11	18	38	6	70	M16 x 50
C	295.22.0133	295.24.0133	295.29.0133	295.21.0133	133		314	50 x 8	197	11	18	38	6	70	M16 x 50
A	295.02.0140	295.04.0140	295.09.0140	295.01.0140	140 5"	125	260	50 x 8	204	11	18	38	6		M16 x 50
B	295.12.0140	295.14.0140	295.19.0140	295.11.0140	140 5"	125	322	50 x 8	204	11	18	38	6	70	M16 x 50
C	295.22.0140	295.24.0140	295.29.0140	295.21.0140	140 5"	125	322	50 x 8	204	11	18	38	6	70	M16 x 50
* A	295.02.0146	295.04.0146	295.09.0146	295.01.0146	146		266	50 x 8	210	11	18	38	6		M16 x 50
* B	295.12.0146	295.14.0146	295.19.0146	295.11.0146	146		328	50 x 8	210	11	18	38	6	70	M16 x 50
* C	295.22.0146	295.24.0146	295.29.0146	295.21.0146	146		328	50 x 8	210	11	18	38	6	70	M16 x 50
* A	295.02.0152	295.04.0152	295.09.0152	295.01.0152	152		272	50 x 8	216	11	18	38	6		M16 x 50
* B	295.12.0152	295.14.0152	295.19.0152	295.11.0152	152		334	50 x 8	216	11	18	38	6	70	M16 x 50
* C	295.22.0152	295.24.0152	295.29.0152	295.21.0152	152		334	50 x 8	216	11	18	38	6	70	M16 x 50
A	295.02.0159	295.04.0159	295.09.0159	295.01.0159	159		285	50 x 8	222	11	18	38	6		M16 x 50
B	295.12.0159	295.14.0159	295.19.0159	295.11.0159	159		340	50 x 8	222	11	18	38	6	70	M16 x 50
C	295.22.0159	295.24.0159	295.29.0159	295.21.0159	159		340	50 x 8	222	11	18	38	6	70	M16 x 50
* A	295.02.0165	295.04.0165	295.09.0165	295.01.0165	165		290	50 x 8	228	11	18	38	6		M16 x 50
* B	295.12.0165	295.14.0165	295.19.0165	295.11.0165	165		346	50 x 8	228	11	18	38	6	70	M16 x 50
* C	295.22.0165	295.24.0165	295.29.0165	295.21.0165	165		346	50 x 8	228	11	18	38	6	70	M16 x 50
A	295.02.0168	295.04.0168	295.09.0168	295.01.0168	168 6"	150	293	50 x 8	232	11	18	38	6		M16 x 50
B	295.12.0168	295.14.0168	295.19.0168	295.11.0168	168 6"	150	350	50 x 8	232	11	18	38	6	70	M16 x 50
C	295.22.0168	295.24.0168	295.29.0168	295.21.0168	168 6"	150	350	50 x 8	232	11	18	38	6	70	M16 x 50
* A	295.02.0174	295.04.0174	295.09.0174	295.01.0174	174		300	50 x 8	238	11	18	38	6		M16 x 50
* B	295.12.0174	295.14.0174	295.19.0174	295.11.0174	174		356	50 x 8	238	11	18	38	6	70	M16 x 50
* C	295.22.0174	295.24.0174	295.29.0174	295.21.0174	174		356	50 x 8	238	11	18	38	6	70	M16 x 50



**KAPBEUGEL DIN 3567 model A B C**  
**295**

Ø 22 – 1016 mm 1/2" - 40"

op aanvraag: naar eigen ontwerp en materiaal specificatie

RVS-304 RVS-316 S235 zwart THVZ Ø mm inch

	RVS-304	RVS-316	S235 zwart	THVZ	Ø mm inch	DN	A	B x D	C	F	G	H	R	J	montage
* A	295.02.0178	295.04.0178	295.09.0178	295.01.0178	178		304	50 x 8	242	11	18	38	6		M16 x 50
* B	295.12.0178	295.14.0178	295.19.0178	295.11.0178	178		360	50 x 8	242	11	18	38	6	70	M16 x 50
* C	295.22.0178	295.24.0178	295.29.0178	295.21.0178	178		360	50 x 8	242	11	18	38	6	70	M16 x 50
A	295.02.0191	295.04.0191	295.09.0191	295.01.0191	191		320	50 x 8	254	11	18	38	6		M16 x 50
B	295.12.0191	295.14.0191	295.19.0191	295.11.0191	191		372	50 x 8	254	11	18	38	6	70	M16 x 50
C	295.22.0191	295.24.0191	295.29.0191	295.21.0191	191		372	50 x 8	254	11	18	38	6	70	M16 x 50
A	295.02.0194	295.04.0194	295.09.0194	295.01.0194	194 7"	175	325	50 x 8	258	11	18	38	6		M16 x 50
B	295.12.0194	295.14.0194	295.19.0194	295.11.0194	194 7"	175	376	50 x 8	258	11	18	38	6	70	M16 x 50
C	295.22.0194	295.24.0194	295.29.0194	295.21.0194	194 7"	175	376	50 x 8	258	11	18	38	6	70	M16 x 50
A	295.02.0203	295.04.0203	295.09.0203	295.01.0203	203		335	50 x 8	267	11	18	38	6		M16 x 50
B	295.12.0203	295.14.0203	295.19.0203	295.11.0203	203		385	50 x 8	267	11	18	38	6	70	M16 x 50
C	295.22.0203	295.24.0203	295.29.0203	295.21.0203	203		385	50 x 8	267	11	18	38	6	70	M16 x 50
A	295.02.0216	295.04.0216	295.09.0216	295.01.0216	216		344	50 x 8	280	11	18	38	6		M16 x 50
B	295.12.0216	295.14.0216	295.19.0216	295.11.0216	216		389	50 x 8	280	11	18	38	6	70	M16 x 50
C	295.22.0216	295.24.0216	295.29.0216	295.21.0216	216		389	50 x 8	280	11	18	38	6	70	M16 x 50
A	295.02.0219	295.04.0219	295.09.0219	295.01.0219	219 8"	200	356	50 x 8	284	11	18	38	6		M16 x 50
B	295.12.0219	295.14.0219	295.19.0219	295.11.0219	219 8"	200	402	50 x 8	284	11	18	38	6	70	M16 x 50
C	295.22.0219	295.24.0219	295.29.0219	295.21.0219	219 8"	200	402	50 x 8	284	11	18	38	6	70	M16 x 50
* A	295.02.0226	295.04.0226	295.09.0226	295.01.0226	226		362	50 x 8	291	11	18	38	6		M16 x 50
* B	295.12.0226	295.14.0226	295.19.0226	295.11.0226	226		409	50 x 8	291	11	18	38	6	70	M16 x 50
* C	295.22.0226	295.24.0226	295.29.0226	295.21.0226	226		409	50 x 8	291	11	18	38	6	70	M16 x 50
* A	295.02.0241	295.04.0241	295.09.0241	295.01.0241	241		370	50 x 8	306	11	18	38	6		M16 x 50
* B	295.12.0241	295.14.0241	295.19.0241	295.11.0241	241		424	50 x 8	306	11	18	38	6	70	M16 x 50
* C	295.22.0241	295.24.0241	295.29.0241	295.21.0241	241		424	50 x 8	306	11	18	38	6	70	M16 x 50
* A	295.02.0245	295.04.0245	295.09.0245	295.01.0245	245		376	50 x 8	310	11	18	38	6		M16 x 50
* B	295.12.0245	295.14.0245	295.19.0245	295.11.0245	245		428	50 x 8	310	11	18	38	6	70	M16 x 50
* C	295.22.0245	295.24.0245	295.29.0245	295.21.0245	245		428	50 x 8	310	11	18	38	6	70	M16 x 50
* A	295.02.0253	295.04.0253	295.09.0253	295.01.0253	253		385	50 x 8	318	11	18	38	6		M16 x 50
* B	295.12.0253	295.14.0253	295.19.0253	295.11.0253	253		436	50 x 8	318	11	18	38	6	70	M16 x 50
* C	295.22.0253	295.24.0253	295.29.0253	295.21.0253	253		436	50 x 8	318	11	18	38	6	70	M16 x 50
A	295.02.0267	295.04.0267	295.09.0267	295.01.0267	267		402	60 x 8	342	14	22	60	8		M20 x 60
B	295.12.0267	295.14.0267	295.19.0267	295.11.0267	267		488	60 x 8	342	14	22	60	8	86	M20 x 60
C	295.22.0267	295.24.0267	295.29.0267	295.21.0267	267		488	60 x 8	342	14	22	60	8	86	M20 x 60
A	295.02.0273	295.04.0273	295.09.0273	295.01.0273	273 10"	250	408	60 x 8	348	14	22	60	8		M20 x 60
B	295.12.0273	295.14.0273	295.19.0273	295.11.0273	273 10"	250	494	60 x 8	348	14	22	60	8	86	M20 x 60
C	295.22.0273	295.24.0273	295.29.0273	295.21.0273	273 10"	250	494	60 x 8	348	14	22	60	8	86	M20 x 60
A	295.02.0300	295.04.0300	295.09.0300	295.01.0300	300		435	60 x 8	375	14	22	60	8		M20 x 60
B	295.12.0300	295.14.0300	295.19.0300	295.11.0300	300		521	60 x 8	375	14	22	60	8	86	M20 x 60
C	295.22.0300	295.24.0300	295.29.0300	295.21.0300	300		521	60 x 8	375	14	22	60	8	86	M20 x 60
A	295.02.0318	295.04.0318	295.09.0318	295.01.0318	318		452	60 x 8	392	14	22	60	8		M20 x 60
B	295.12.0318	295.14.0318	295.19.0318	295.11.0318	318		538	60 x 8	392	14	22	60	8	86	M20 x 60
C	295.22.0318	295.24.0318	295.29.0318	295.21.0318	318		538	60 x 8	392	14	22	60	8	86	M20 x 60
A	295.02.0324	295.04.0324	295.09.0324	295.01.0324	324 12"	300	458	60 x 8	398	14	22	60	8		M20 x 60
B	295.12.0324	295.14.0324	295.19.0324	295.11.0324	324 12"	300	544	60 x 8	398	14	22	60	8	86	M20 x 60
C	295.22.0324	295.24.0324	295.29.0324	295.21.0324	324 12"	300	544	60 x 8	398	14	22	60	8	86	M20 x 60
A	295.02.0356	295.04.0356	295.09.0356	295.01.0356	356 14"	350	492	60 x 8	432	14	22	60	8		M20 x 60
B	295.12.0356	295.14.0356	295.19.0356	295.11.0356	356 14"	350	578	60 x 8	432	14	22	60	8	86	M20 x 60
C	295.22.0356	295.24.0356	295.29.0356	295.21.0356	356 14"	350	578	60 x 8	432	14	22	60	8	86	M20 x 60
A	295.02.0368	295.04.0368	295.09.0368	295.01.0368	368		504	60 x 8	444	14	22	60	8		M20 x 60
B	295.12.0368	295.14.0368	295.19.0368	295.11.0368	368		590	60 x 8	444	14	22	60	8	86	M20 x 60
C	295.22.0368	295.24.0368	295.29.0368	295.21.0368	368		590	60 x 8	444	14	22	60	8	86	M20 x 60

**www.hazal.nl/295 offerte 295 verkoop@hazal.nl**

tussentijdse model wijzigingen voorbehouden

\* = niet genormaliseerd



**KAPBEUGEL DIN 3567 model A B C**  
**295**

Ø 22 – 1016 mm 1/2" - 40"

op aanvraag: naar eigen ontwerp en materiaal specificatie

[www.hazal.nl/295](http://www.hazal.nl/295) **offerte** **295** [verkoop@hazal.nl](mailto:verkoop@hazal.nl)

tussentijdse model wijzigingen voorbehouden

\* = niet genormaliseerd

	RVS-304	RVS-316	S235 zwart	THVZ	Ø mm inch	DN	A	B x D	C	F	G	H	R	J	montage
<b>A</b>	295.02.0406	295.04.0406	295.09.0406	295.01.0406	<b>406 16"</b>	400	570	70 x 10	498	18	27	60	10		M24 X 80
<b>B</b>	295.12.0406	295.14.0406	295.19.0406	295.11.0406	<b>406 16"</b>	400	672	70 x 10	498	18	27	60	10	104	M24 X 80
<b>C</b>	295.22.0406	295.24.0406	295.29.0406	295.21.0406	<b>406 16"</b>	400	672	70 x 10	498	18	27	60	10	104	M24 X 80
<b>A</b>	295.02.0420	295.04.0420	295.09.0420	295.01.0420	<b>420</b>		582	70 x 10	510	18	27	60	10		M24 X 80
<b>B</b>	295.12.0420	295.14.0420	295.19.0420	295.11.0420	<b>420</b>		684	70 x 10	510	18	27	60	10	104	M24 X 80
<b>C</b>	295.22.0420	295.24.0420	295.29.0420	295.21.0420	<b>420</b>		684	70 x 10	510	18	27	60	10	104	M24 X 80
<b>A</b>	295.02.0457	295.04.0457	295.09.0457	295.01.0457	<b>457 18"</b>	450	619	70 x 10	547	18	27	60	10		M24 X 80
<b>B</b>	295.12.0457	295.14.0457	295.19.0457	295.11.0457	<b>457 18"</b>	450	721	70 x 10	547	18	27	60	10	104	M24 X 80
<b>C</b>	295.22.0457	295.24.0457	295.29.0457	295.21.0457	<b>457 18"</b>	450	721	70 x 10	547	18	27	60	10	104	M24 X 80
<b>A</b>	295.02.0508	295.04.0508	295.09.0508	295.01.0508	<b>508 20"</b>	500	672	70 x 10	600	18	27	60	10		M24 X 80
<b>B</b>	295.12.0508	295.14.0508	295.19.0508	295.11.0508	<b>508 20"</b>	500	774	70 x 10	600	18	27	60	10	104	M24 X 80
<b>C</b>	295.22.0508	295.24.0508	295.29.0508	295.21.0508	<b>508 20"</b>	500	774	70 x 10	600	18	27	60	10	104	M24 X 80
<b>A</b>	295.02.0520	295.04.0520	295.09.0520	295.01.0520	<b>520</b>		686	70 x 10	614	18	27	60	10		M24 X 80
<b>B</b>	295.12.0520	295.14.0520	295.19.0520	295.11.0520	<b>520</b>		788	70 x 10	614	18	27	60	10	104	M24 X 80
<b>C</b>	295.22.0520	295.24.0520	295.29.0520	295.21.0520	<b>520</b>		788	70 x 10	614	18	27	60	10	104	M24 X 80
* <b>A</b>	295.02.0559	295.04.0559	295.09.0559	295.01.0559	<b>559 22"</b>	550	725	70 x 10	653	18	27	60	10		M24 X 80
* <b>B</b>	295.12.0559	295.14.0559	295.19.0559	295.11.0559	<b>559 22"</b>	550	827	70 x 10	653	18	27	60	10	104	M24 X 80
* <b>C</b>	295.22.0559	295.24.0559	295.29.0559	295.21.0559	<b>559 22"</b>	550	827	70 x 10	653	18	27	60	10	104	M24 X 80
* <b>A</b>	295.02.0610	295.04.0610	295.09.0610	295.01.0610	<b>610 24"</b>	600	776	70 x 10	704	18	27	60	10		M24 X 80
* <b>B</b>	295.12.0610	295.14.0610	295.19.0610	295.11.0610	<b>610 24"</b>	600	878	70 x 10	704	18	27	60	10	104	M24 X 80
* <b>C</b>	295.22.0610	295.24.0610	295.29.0610	295.21.0610	<b>610 24"</b>	600	878	70 x 10	704	18	27	60	10	104	M24 X 80
* <b>A</b>	295.02.0660	295.04.0660	295.09.0660	295.01.0660	<b>660 26"</b>	650	826	70 x 10	754	18	27	60	10		M24 X 80
* <b>B</b>	-	-	-	-											
* <b>C</b>	-	-	-	-											
* <b>A</b>	295.02.0710	295.04.0710	295.09.0710	295.01.0710	<b>710 28"</b>	700	876	70 x 10	804	18	27	60	10		M24 X 80
* <b>B</b>	-	-	-	-											
* <b>C</b>	-	-	-	-											
* <b>A</b>	-	-	295.09.0762	295.01.0762	<b>762 30"</b>	750	928	70 x 10	856	18	27	60	10		M24 X 80
* <b>B</b>	-	-	-	-											
* <b>C</b>	-	-	-	-											
* <b>A</b>	-	-	295.09.0812	295.01.0812	<b>812 32"</b>	800	978	70 x 10	906	18	27	60	10		M24 X 80
* <b>B</b>	-	-	-	-											
* <b>C</b>	-	-	-	-											
* <b>A</b>	-	-	295.09.0914	295.01.0914	<b>914 36"</b>	900	1099	75 x 12	1024	15	27	60	22		M24 X 80
* <b>B</b>	-	-	-	-											
* <b>C</b>	-	-	-	-											
* <b>A</b>	-	-	295.09.1016	295.01.1016	<b>1016 40"</b>	1000	1201	75 x 12	1126	15	27	60	22		M24 X 80
* <b>B</b>	-	-	-	-											
* <b>C</b>	-	-	-	-											